



THE



FLATWHEEL

APRIL 2017

VOLUME 52, NUMBER 4



In This Issue

APRIL 2017

VOLUME 52 NUMBER 4

FEATURES

7 **SPRING LAYOUT
TOURS**

9 **SAUSCHWANZLEBAHN
EXCURSION RAILWAY**

17 **A FOCUS ON AREA
HOBBY SHOPS**

19 **THE BYLINE**

COLUMNS

- **3 North Coast Leadership**
- **4 An Editorial**
- **5 Herbie's Rumblings**
- **6 General Meeting Minutes**
- **10 This & That**
- **12 Membership**
- **12 Raffle**
- **12 Clinic**
- **13 Company Store**
- **14 Module Group**
- **14 Contest Table**
- **21 What's Going On?**
- **27 Hobby Sources Listings**



This month's cover photo shows Livonia Avon & Lakeville engine 423 on the main near Lakeshore Lumber on the Erie Mad River Model Railroad Club, Sandusky, OH. Photo by Bruce

ELECTED OFFICERS

Superintendent - Steve Kaplan (216) 561-1648
spk@skaplanassociates.com

Assistant Superintendent - Lee Sheffield
lakeshorenyc@yahoo.com

Secretary - Dave Williams (440) 838-4996
dave_wms@sbcglobal.net

Treasurer - Greg Noeth (216) 789-2086
gjnoeth@yahoo.com

Trustee East - Fred Obreza (216) 587-4419
chevy5664@sbcglobal.net

Trustee Quad County - Jim Moore (419) 684-5833
moorez@aol.com

Trustee West - Gary Schaefer, trains.ohio@yahoo.com

Trustee at Large - Brian Haas, haasland@msn.com

Trustee at Large - John Hemsath (440) 871-9676
hemsathj@gmail.com

APPOINTED POSITIONS

Great Berea Train Show - David James h (440)-717-1778
c (440)-785-9907 david.j@brtcharter.com

Achievement - Bruce Brintnall MMR,
brintnall@mindspring.com

Layout Tours - Ron Morgan, ronalco@sbcglobal.net

Contests - David Lawler, davelawler@oh.rr.com

Historian/Archivist = Frank Bongiovanni

Raffle - Mike Klein, pstlw@cox.net

Co. Store Manager - Chuck Klein, cbklein765@gmail.com

Clinics - Larry Madson, lmadson@roadrunner.com

Flatwheel Editor - Bruce Bowie, in2trains@gmail.com

Membership - Bill & Billy Ferry, clevelandbill@mac.com

Modules - Scott Benson, sbenson440@zoominternet.net

N.O.A.R.S. Representative - Bill Kovacs

Webmaster - Ben Lanza, blqt@nls.net

Refreshments - Joe Filipiak, graftonpotter@frontier.com

Training Day - Gary Schaefer, trains.ohio@yahoo.com

NORTH COAST LEADERSHIP

AN EDITORIAL



Dirty track has been the bane of our hobby since we moved from sprung wound locomotives to using electricity through the rails. We made the situation worse when we introduced DC power to smaller scales and we continued down this path of frustration with the advent of DCC. Those nasty little digital packets of 1's and 0's just don't like dirty track.

Sure, nickel silver rail improved our lot in life as its oxides are more conductive than brass oxides, but still, our engines stall and lights flicker!! Arrrgh! 🤖

I remember using actual sandpaper on my layouts while a kid still at home with little understanding how the scratches would only enhance the collection of dirt and grease, compounding my problems.

Then came the ink eraser that certainly shined those rails and greatly reduced the scratch problem. But hey, how many feet of rails do YOU have? Even my smallest layout had way too many feet of rails to consider this approach very often.

One of the early inventors in our hobby, John Allen I am thinking, came up with the idea of mounting a piece of masonite "fuzzy" side down under a freight car. I tried this and found it a more efficient way to get to those scale miles of track and the smudged surface seemed to validate it did SOMETHING, but I am not sure just how effective it really was. I still have my car somewhere in my museum of model railroad track cleaning options.

Then came the liquid cleaner era. How about those industrial

liquids like Methyl Ethyl Ketone (MEK) and trichlorethane? Did you and/or your home survive? They cleaned alright but at what cost to our health? Anybody melt their track? Ask how I know of this issue!

How many have tried alcohol, Goo Gone, automatic transmission fluid, or any one of the commercial model track cleaning products? They clean the track but for how long? And application becomes an issue. I personally have invested several hundreds of dollars in track cleaning cars designed to put down, and some theoretically to then remove such products.

I am a techie and I know our hobby now includes Currentkeepers and other similar devices. Just get out your money at \$20+ each, soldering iron and off you go. Oh yeah, you also might need whatever product you use to control your nerves as you try to fit them into your locomotives, passenger cars and cabooses. Personally, a wee dram of Talisker works best for my nerves.

There is only one correct way to clean model railroad track and I am about to share it with you lucky few!!



I strongly recommend DeoxIT. DeoxIT D-Series is a fast-acting deoxidizing solution that cleans, preserves, lubricates and improves conductivity on metal connectors and contacts. Use as a general treatment for connectors, contacts and other metal surfaces. Use on non-critical metal surfaces with severe oxidation and corrosion on the metal surface. If there is a discoloration of the metal - it is severe. Use DeoxIT to dissolve the contamination. DeoxIT will also lubricate and protect the surface. This is a pricey product at \$8.39 for a 2mL tube (Amazon pricing). But you only need a SMALL drop on each rail. Then run an engine through the drops and around your layout. For you owners of railroads with thousands of feet of mainline, perhaps applying in a couple locations might be warranted. Guys, this is really good stuff!



I also highly recommend Atlas's track cleaning car. While at \$100+ it is not inexpensive, it works! I only use its vacuum function. It is amazing how powerful the suction is on this car. In fact, if your tack is ballasted, I hope you did not spare the glue!

Email me how YOU do it!

Seriously, I know there are more than one best way. So email me how YOU do it so we can share it with our members. 🚂

BRUCE BOWIE
EDITOR



HERBIE'S RUMBLINGS



HELP EVERY MODEL RAILROADER BECOME INJURY EXEMPT

This will be short - I am in the crunch part of my busiest busy season. (So much for retirement.) I did take two days off to man a couple of tables at Railfest. Got rid of a lot of kits that I was never going to take the time to build. Our module group was set up there, and was certainly one of the key attractions.

Many, but perhaps not all, of you are aware of the passing of Gary Burdette MMR, Superintendent of the Coal Division (9) in West Virginia. Gary was a familiar figure at all of the Regional conventions - I know many of you attended his clinics. Gary passed away March 15 after a battle with cancer.

Two things I feel I need to remind you about - again. ONE - please engage the new members and/or guests in conversation before the meeting, and during the break. They can be identified by a green name tag (or no name tag if they sneak past Bill Ferry. TWO - please stick around for a little while after the meeting to help put the tables and chairs away.

There is still time to get your registration in for the upcoming Regional Convention in Louisville. Info is at <http://www.2017panamerican.org/>.

CLICK for REGION CONVENTION

Saturday, April 29th, is the 2017 Pittsburgh Model Railroad Jamboree. It is a full day of clinics and networking that a number of us usually attend. A copy of the flyer is attached to this Flatwheel. Bob Weinheimer from the Coal Division (Nine) and I will be giving one of the clinics. They feed you breakfast and lunch, with an optional banquet, and even have some layout tours the next day, so it is really almost a "mini" regional convention. Think of it as a warm-up for Louisville.

AND - if you don't go to the Jamboree, you still can't get out of watching my presentation, because Bruce Brintnall and I will be giving it at the May meeting.

Remember, you can get some great ideas all year long about what other Divisions, as well as Regions, are doing by visiting their websites and reading their newsletters. The easiest way to find them is to start at <http://www.midcentral-region-nmra.org/divisions2.html>

CLICK for NEWSLETTERS

In fact, you can access every Division in the NMRA by going to the NMRA website and hitting the "Regions" button on line three. See you at the meeting. 🚂

FROM the CHURCH

Hi Mr. Kaplan

Just wanted to update you and invite any of your members who would like to join us.

On Sunday April 30 from 12-2PM we will have the Westlake Fire Department update and review with us CPR skills and use of AED. We will have a light lunch provided for those who are attending the class. There will not be a fee and there will not be a certification card provided. I thought the sign up sheet might be helpful to you and have attached it to this message. There is a hard copy posted on the bulletin board outside the church office.

Thanks again for providing the AED in our building in memory of Mr. Orlando. The memorial plaque is in process and will be posted by April 30.

Please let me know if you have any questions.

Look forward to seeing on April 30.

Thank you

Gayle Donahue

**STEVE KAPLAN, SUPERINTENDENT
THE NORTH COAST DIVISION**



GENERAL MEETING MINUTES

MARCH 10, 2017

Superintendent Steve Kaplan called the meeting to order at 7:30 pm.

Membership Co-Chair Bill Ferry announced the Division had gained one new member since the last meeting. There were no visitors present. Bill said that the Division currently has 201 members.

Steve reminded everyone of the memorial service on March 11th for Susan Tressa (Rich's wife).

Treasurer Greg Noeth stated that the Division assets totaled \$50,381.



Dave Lawler, Contest Chair, said that the evening's contest was for water tanks or towers and reminded everyone to vote. January contest

winner gave descriptions of their models and techniques. There were no Show and Tell items. Dave announced that the March contest would be "patch paint freight cars".

Layout Tour Chair Ron Morgan said that layout tours would be on May 7 and 13. Specifics would be sent to members about three weeks before the tours. November tours are being lined up and will include new layouts in the Medina area.

Steve encouraged everyone to attend the upcoming Regional convention in Louisville KY in May, and also consider the one day Division 2 Jamboree in Pittsburgh this April. Information on these events will be in *The Flatwheel*.

Chuck Klein, Company Store, reported that he had one FR&P car, and that he was selling out of the steel side reefers. Chuck mentioned the B&O mini-convention and the Nickel Plate Society's convention coming up in the

near future.

Raffle Dude Mike Klein reviewed the evening's raffle items, which included a B&O Society 2017 calendar received from that organization.

Steve said that plaques showing the Paul Novak Award winners had been reorganized by Ben Lanza with a new section to provide room for future winners.

Bruce Bowie announced that March 26 is *The Flatwheel* deadline. Bruce described Raffle Bucks and announced the current winners for submissions of events/pictures/articles for *The Flatwheel*. Bruce reminded everyone to submit events to *The Flatwheel* in addition to just making meeting announcements.

Larry Madson, Clinic Chair, said that tonight's clinic (during pizza time) would be a re-showing of Darl Swift's Anaconda Mine video, with additional DVDs available if time permitted. Next month will be a clinic on Car Tuning. May and June will be decided.

Scott Benson, Modular Group Chair, said that the group would have a layout at Railfest and then be at the Ritter Vermilion Library April 22/23.

Bill Ferry called for membership table volunteers for Railfest.

Joe Filipiak suggested going to the Grafton Midview Library page and viewing their historical information on Grafton train wrecks.



Lee Sheffield reported that he had arranged the annual picnic to be at the Northeastern Ohio Live Steamers (NEOLS) on July 22.

Steve announced that the pizza should arrive shortly. 🍕

DAVID M. WILLIAMS
SECRETARY



Last month we highlighted the layouts that will be open on Sunday May 7th, 2017. This month we bring you the layouts to be open on Saturday, May 13th from noon to 4 PM. These layouts are in the Sandusky and Bellevue areas of our Division, an easy drive down Route 2 or the Ohio Turnpike.

EERIE MAD RIVER MODEL RAILROAD CLUB

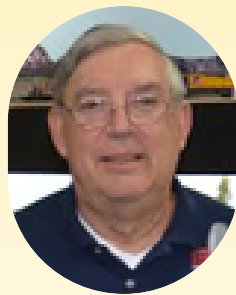


**Jim Moore, COLD CREEK and
LAKE ERIE RAILROAD**



SPRING LAYOUT TOURS

**RON MORGAN
LAYOUT TOUR
CHAIRMAN**



More Moore



**Fred Wagner, MILLS CREEK
and LAKE ERIE RAILROAD**

George Keller

NORFOLK and WESTERN



Directions to the open houses will be provided to the membership via email and the MEMBERS ONLY section of our website several weeks prior to the open houses. 🚂

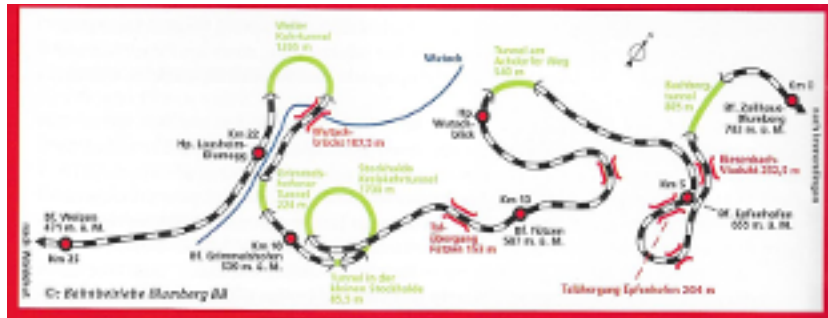


SAUSCHWANZLEBAHN EXCURSION RAILWAY – THE “PIGGY’S TAIL” RAILWAY

SCOTT BENSON



During our trip to Germany last year, I dragged my wife and another couple we were traveling with to a steam excursion. Actually, they were willing participants, and enjoyed it as much as I did. It was the Piggy’s Tail Railway in the southern Black Forest town of Blumberg. Why “Piggy’s Tail”? Take a look at the track plan in the figure below.



It was built from 1887 to 1890 for strategic military means to surround a county in Switzerland and anticipating another war with France. Other existing lines were too steep for heavy military load trains, or passed through Switzerland. They limited the grade to less than 1%, so the section the excursion covers has over 25 km (15.5 miles - Editor) of track to travel 9 km (5.6 miles - Editor) as the crow flies! There are 4 large trestles and 5 tunnels, one of which is nearly a full circle, passing under itself. On the track plan, the green track indicates the tunnels. 🚂



The line was never used for its intended purposes, and lightly used otherwise. It has been a historical/excursion railway since 1977.

We had an enjoyable trip. The scenery was very nice, but the cold, cloudy and rainy weather wasn't the best for sightseeing. They were doing some living history that day, so they had people in period costumes roaming the train and singing, chatting, or selling their wares (breads, honey, homemade schnapps!). Unfortunately, none of them spoke much English, so we just watched! There is also a very nice museum on-site with a full/operational interlocking tower. Definitely a fun half-day outing that I heartily recommend.

CLICK for the SAUSCHWAENZLEBAHN website

SHOWCASE MINIATURES - Member Joe Kurilec passed this along. While working on a utility pole project I did a Google search for some HO scale transformers. I find if I use the word "images of "(a given subject) I get a search showing what is out there. Many times these images link to a company that makes the part I am looking for. That is how I found Showcase Miniatures! Showcase Miniatures has products for scales HO, N, NN3 and Z! This firm makes some VERY clean castings of transformers, fuse, power gird parts and utility pole kits. The prices of the products they make are **VERY** reasonable and the shipment comes fast!

CLICK for the SHOWCASE WEBSITE

Viewing Showcase Miniatures web site was a pleasure. The site is very user friendly.

I also found some relay cabinets with working doors and inside details! Great castings and fine details! I am very pleased with the 40 foot pole mount transformer bank (part # 23102). To the right is a 30 foot Down line regulator kit (part # 2300) under construction. The double door stacked relay cabinet (part # 2188) is just one of the many signal components on the Showcase Miniatures website. Showcase Miniatures provides modelers with a ton of very good details items. Visit the website!



THIS & THAT

SUMMER PICNIC - The Division will be holding its summer picnic again this year at the Northeastern Ohio Live Steamers (NEOLS) at the Medina County Park in Lester. Save the date - July 22nd. More information will be presented in the June *Flatwheel*. - Editor

CLICK for the NEOLS website.

LOST AND FOUND - I have a very comfortable spot with a great view of the lake in our new home for my hobby work shop. However, it is carpeted with a multi-color short weave that hides **EVERYTHING** I drop on it. I came up with this simple idea and to date I have not lost anything that makes it past my good sized lap. This is a 4'x8' sheet product I bought at Lowes. While not inexpensive, neither are those dropped items and add to that the frustration and this product starts looking like a pretty good deal! - Editor



HANDY TOOL - Member Dave Lawler sent the following missive. I often feel like I'm the last guy to know stuff, but just in case someone hasn't got one of these, here goes.

A couple of years ago, while perusing the tool aisle at my local Ace Hardware, I spotted a General Tools Mfg. Co. No. 17 PROTRACTOR that I thought would work well as a cutting guide for thin materials such as: styrene sheet, scribed wood or Cheerios boxes. The base plate is only .047" thick and the 6" guide arm can be set to any angle and locked with a knurled nut. It's made of stainless steel so spilled coffee won't discolor it. I think it

cost about 12 bucks at Ace and I've seen it for as low as 9 bucks on Lowes web site. Regardless, for a scratch builder/kit basher like me, it is the one of my best tool purchases.

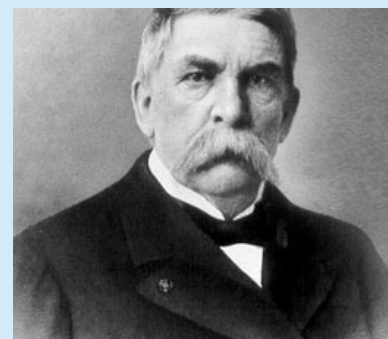
BAILEY YARD

CREDIT: GOLDEN SPIKE TOWER AND VISITOR CENTER,
1249 NORTH HOMESTEAD RD.,
NORTH PLATTE, NEBRASKA 69101

Member Jim Moore provided the inspiration for this month's sidebar column. Thanks Jim!

During the construction of the transcontinental railroad, North Platte was platted as a railroad town by Union Pacific's Chief Engineer Grenville Dodge. It was chosen because of its close proximity to good water, and its distance from Grand Island, Nebraska. In 1866 the first train rolled through what was known at the time as "Hell on Wheels" town. General Dodge quickly moved to construct major shop facilities and winter quarters and by 1867, main line operations began. Just two years later on May 10th, East met West at Promontory Summit in Utah, 690 miles east Sacramento and 1,087 miles west of Omaha. The railroad crossed two-thirds of the continent over some of the most difficult terrain on earth. It was called, "The Work of Giants" and it was the end of the frontier, as we knew it.

General Grenville Dodge,



Engineer for Union Pacific.

In the late 1800s and



OPERATIONS - *The function of "operating" our model railroads is a facet of the hobby I have expounded on in the past. The shared fellowship is what continues to bring me back to attend as many OP sessions as I can. I received the following testimonial in word and pictures from member Jim Moore - Editor*

March 22, 2017 nine members from the CV & WS model railroad club participated in an Op Session at the Cold Creek & Lake Erie RR. During the three hour session 23 jobs were run, the most jobs ever! If you or any group wants to be part of an Op session please contact me at 429-684-5833 or email MooreZ@aol.com.

We use switch lists, 4-5 cars trains with FUN as the most in portent part of each session. Jim Moore 🚂



MEMBERSHIP

We wish to send Happy Birthday Wishes to the following April birthday members:

Thomas Atherton	Carole James	Ronald Morgan
Robert Butler	Patty Kaplan	James Raba
Bob Camburn	William Kovacs	Allen Seman
James Grell	Thomas Mcinnerney	Fred Wagner

MEMBERS: If you look for, but don't find, your birthday in the Flatwheel, it is because the Member Database does not include your birthdate information. If you'd like it to be added, please email Bill Ferry, Membership, at ClevelandBill@mac.com or call (440) 570-2112 and leave a message. 🚂

BILL AND BILLY FERRY MEMBERSHIP CO-CHAIRS



RAFFLE

Hello Everyone! This month we have a fabulous raffle. For the first time on our stage, we have on the raffle table **"Railroading and the Iron Ore Industry"**. This is a great one.

See you there. 🚂

THE RAFFLE DUDES



CLINIC

April 2017

"Cartooning 101"

Lee Sheffield

Actually, it's **Car Tuning 101**, a clinic for those getting started in the model railroad hobby and for those who need a little refresher keeping your rolling stock on the rails instead in your hands.

early 1900s, North Platte became home to Buffalo Bill Cody's Scouts Rest Ranch because of its proximity to the railroad. Able to move his Wild West Show by train or by wagon from this location, Buffalo Bill's Wild West Show entertained throughout the U.S. and performed in front of heads of state throughout the world.

From 1941 to 1946, The North Platte Canteen served more than six million members of the armed forces providing home baked goods and a warm welcome to the nation's young men and women as they passed by for a 10-minute stop. The nation was at war, and the volunteers at the North Platte Canteen stepped up to give each serviceperson a welcome break from going to or returning from the war.

Passenger rail service was discontinued in 1971 after operating for some 105 years. Gone are the days of Pullman sleeping cars, dining cars, lounges and coaches. The romance and luxury of passenger trains was done in by automobiles and air travel.

Today Bailey Yard, named for former Union Pacific president Edd H. Bailey, is the world's largest train yard. Covering a massive 2,850 acres, each day Bailey Yard manages 10,000 railroad cars. Of those, 3,000 are sorted to make sure the cargo reaches its final destination. You can see it all from the Golden Spike Tower and Visitor Center in North Platte. 🚂

Click for Bailey Yard Live Webcam

May 2017

"Imagineering - More Ways To Have Fun With Your Model Railroad"

Steve Kaplan and Bruce Brintnall

Take control of your layout. Can you imagine yourself as an integral character on your layout?

CLINICS WANTED Help!!!! I need a few more for programs for 2016 -2017. If any of you would like to share your modeling techniques, know of someone I could contact for a program, or have a suggestion for a program topic, please contact me. If you have contacted me previously about a program, please take time to remind me again. Larry Madson , madson@roadrunner.com, 440-934-2643 or 440-864-2305

Clinic Presentation Aids

Division 4 has a digital projector available for use by division members for presenting clinic programs in digital format. We now also have a carousel slide projector with carousels. The division also has a video camera available for program enhancement. Anyone wishing to use the camera or the projectors for their program, contact Larry Madson. 🚂

**LARRY MADSON
CLINIC CHAIRMAN**



COMPANY STORE

The company store currently has for your purchasing pleasure the following items. The items are available for purchase at most monthly meetings. You may also contact the Store Manager, Chuck Klein, cbklein765@gmail.com for other options.

NYC MDT Reefers 4 Numbers available

Set of 4 (2 Steel, 2 Wood) \$72

Wood Side \$18 ea. / Steel Side \$20 ea.

ONLY 7 LEFT!!



FREE DVD'S!

I should remind everyone that we have a library of how to DVD's for member use. A \$10.00 deposit for each DVD rented. \$10.00 returned when DVD returned at next meeting. Check the listing by clicking on MEMBERS ONLY, then VIDEO LIBRARY to see a list of over 120 DVD's! 🚂



**MCR Schoolhouse
Laser Cut Kit \$45 ea.**



Division 4 Patches
\$3 ea.



Division 4 Ball Caps
\$20 ea.

CHUCK KLEIN
STORE
MANAGER



CONTEST TABLE

The March 2017 contest was for:

Water Tanks or Water Towers

There were 7 entries and 38 votes and the results are as follows:

- 1st: Jim Grell 15 votes
- 2nd: Rich Mayich, 9 votes
- 3rd: Dave Lawler, 6 votes
- Honorable Mention: Joe Kurilec, 3 votes

Total point standings as of March are as follows:

- 1st: Mayich 19
- 2nd: Hemsath 15
- 3rd: Grell 14
- 4th: Keller 13
- 5th: Lawler 9
- 6th: Novak Jr., Puch 5

MODULE GROUP

The module group was recently at Railfest the weekend of March 17th and 18th at Lakeland Community College.



We had modules up and running in record time well before the show started. The show itself was a great success. We had several questions on our operating system and what the standards were of the modules. We also had several little Engineers running trains. We received a lot of compliments on how well the modules looked and ran. Our next event is that the Ritter Public Library in Vermilion on April 22nd and 23rd. 🚂

SCOTT BENSON
MODULE GROUP



As you can see from this and several previous contest's results the dioramas pretty well overwhelm the non-diorama models even though many of these are excellent models. Therefore in order to make the contests more equitable and give more people a chance to gain points, I have decided to make every contest diorama optional but separate the voting.

Diorama entries will get letters instead of numbers while plain models will get numbers. Everyone will be asked to vote for one entry in each category.

Example: a box car by itself, on a section of track or a mirror will be entered as a plain model while a box car on a detailed base with a truck backed up to it and figures loading merchandise into it is a diorama. 🚂

CONTEST PHOTOS BY STAFF PHOTOGRAPHER DAVID WILLIAMS

DAVE LAWLER
CONTEST
CHAIRMAN

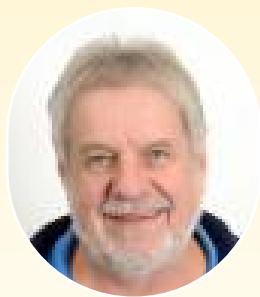






A FOCUS ON AREA HOBBY SHOPS

ONE IN A SERIES BY
JOE KURILEC
MMR



PHOTOS BY THE AUTHOR

Stockyard Express

49293 Plate Rd.

Oberlin, OH 44074

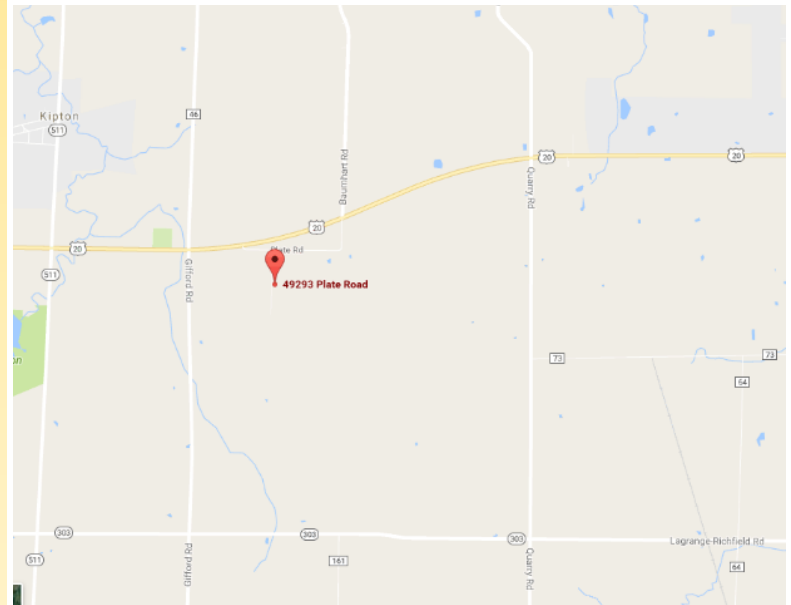
440-774-2131

Website: www.stockyardexpressllc.com

Stockyard Express was featured in a Model Railroader online video recently!

I want to thank Diane & Clyde Lewis for letting me run all over the store for this article!

You can get to Stockyard Express using the Ohio turnpike west. Get off at exit 140. Go south on route 58 past Oberlin turning west on route 20. Or I-480 west, following route 10 west to route 20.



Stockyard Express is located in a barn PACKED with MTH, Lionel, RailKing, Atlas and American Flyer trains! When I was there I did not know what to look at first!

The amount of train items stock is really worth a trip!



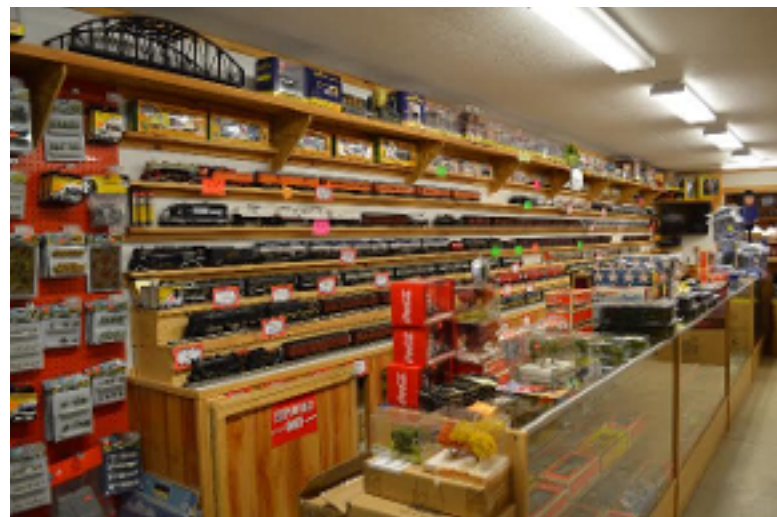
The center of the store has a working layout with a lot of

very interesting items as do the many well stock shelves. As I wandered around Stockyard Express it took me back to Higbees or the Hobby House located in downtown Cleveland remembering all of the great Lionel Trains displays.

American Flyer Trains are displayed and have a lot of items that I did not expect to see.



One room is dedicated to the RailKing brand. It was really fun to view all of the items at Stockyard Express!



There is a great selection of O scale figures, cars, trucks and scenery products. Please make time for a



visit to Stockyard Express. 🚂



THE BYLINE...

BY GARY SOLE



PHOTOS BY THE AUTHOR

This month we'll talk about making bridge piers from dimensional lumber. I started by purchasing the Walthers double track bridge piers. They're very nice, but for my purpose I had to cut them down to a very exact height. After comparing my gap to be bridged, I decided to make my own piers.

I went to Lowe's. I remember seeing some very nice dimensional lumber one day when I was just roaming the store. For this purpose I wanted a 1x3 that was only a half inch wide, a .75 inch wide piece would have been too bulky. I also purchased a 1x1/4 inch piece. The 1x1/4 became the base and I glued the 1x1/4 to the 1x3 at a 90 degree angle. I then cut two squares of Homasote and glued them to the back of the 1x3.



At this point I had an ugly bridge pier. The next step was to mark the Homasote back plate to match the height of my layout roadbed. Let me digress a moment. I helped a friend build his layout a few years ago. Every Friday night a group of us got together and did work sessions. During those sessions I met a gentleman by the name of Jeff Gray. Jeff was an engineer and one of the items he made for the layout owner was a set of bridge piers.

I learned from that experience that if you keep one surface flat you can use an electric chop saw to make some cool model railroad scenery items including bridge piers. The first step was to cut the Homasote top to match the height of my roadbed. I put the square base against the guide wall of the saw and cut one side of the pier square. Now I had a square side to use to guide the top cut of the Homasote. Now with the top and bottom both flat surfaces I went to work to form the sides.

So with the pier standing upright and the Homasote

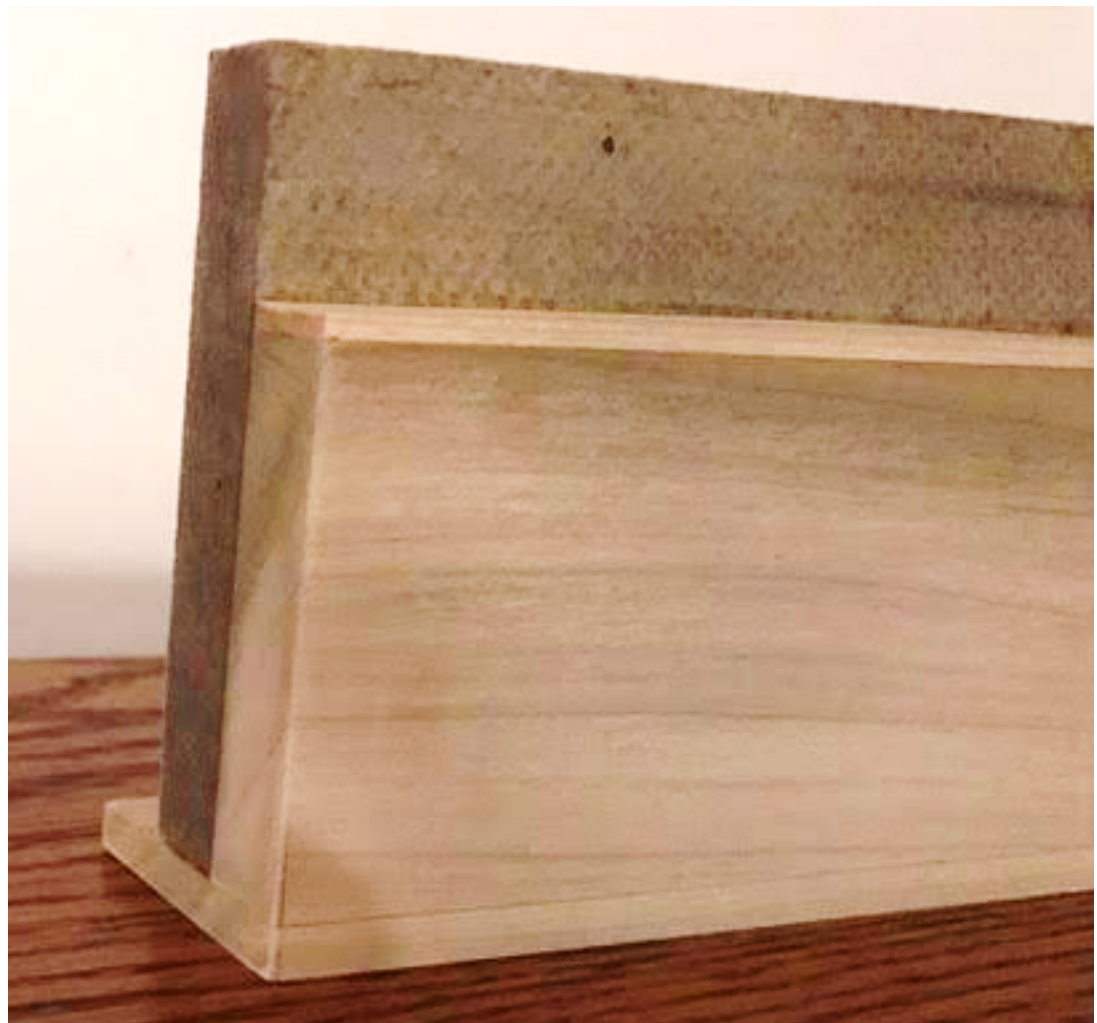
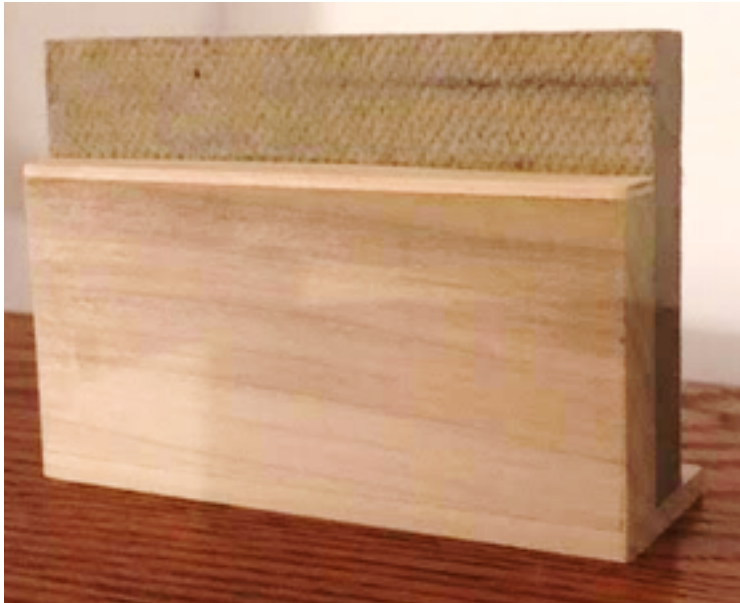
back against the guide wall of the saw. I made the first cut. The cut was a 30 degree angle with a 2 percent compound angle from top to bottom (top being slightly narrower) for drainage. I duplicated the same cut on the other side (see pictures). While this took some planning it is a lot of fun to do. Side note: Next time I would use a 4 or 5 degree compound angle, on the sides.

I then used basswood strips a half inch wide to build up the pier section under the bridge until the bridge, back plate and layout roadbed were all the same height.

Next month, we'll discuss the benefits of helping a friend with his or her layout...in the meantime build something! 🚂

Best Regards,

Gary



WHAT'S GOING ON?

2017 MEDINA MODEL RAILROAD & TOY SHOWS

SUNDAY - APRIL 2nd

CHRISTMAS **X**TRAVAGANZA
SUNDAY DECEMBER 4th

-- New Hours 9 AM TO 3 PM --
MEDINA COUNTY COMMUNITY CENTER
(Medina Fairgrounds)
Medina, Ohio

TOYS

TRAINS

MEMORABILIA



FOR ADDITIONAL INFORMATION
WRITE, CALL or VISIT OUR WEBSITE

LARGE PARKING AREA



ADDRESS
Corvett & Dowdell Productions, Inc
8047 Kennard Rd., Lodi, OH 44204
330 (541-4400) Day, (716) 220-8363
www.corvettanddowdell.com

TABLES
\$30 Day Show + \$25 if present by Wednesday before show!

SET-UP
Night Before Show 4 p.m. to 8 p.m.
Day of Show - 7 a.m. to 9 a.m. -- **New Hours**
Door Prices + Food & Drink

ADMISSION
Adults \$8.95 - Children under 12 FREE

PAINESVILLE RAILROAD MUSEUM FUNDRAISER

Saturday, April 8, 2017 3 to 5 p.m.

HORS D'OEUVRES & DRINKS

Come and join us for an evening of great Hors d'oeuvres and the fellowship of railroad enthusiast at:

Harry Buffalo
2119 Mentor Ave.
Painesville, Ohio 44077




Menu: All you can eat and drink for 2 hours

- Smothered Chicken
- Sheet Pizza
- Bonesless Wings
- Salad - Fries

All you can Drink - Domestic Draft Beer, House Wine & Well
Liquors from 3 pm to 5 pm

Cost: \$20.00 Each
For Tickets, contact:
Pre-Sale only

Lenny Kessler
3257 Center Road
Perry, Ohio 44081
Phone (440) 417-6746
cylesen@roadrunner.com



The Painesville Railroad Museum
475 Railroad Street, Painesville, Ohio 44077
www.painesvilleraillroadmuseum.org
58033 rrc@rrhm

Proceeds to help the restoration and preservation of the historic Painesville Depot and bring her back to its glory days of the NYC.

The Youngstown Model Railroad Association
Presents:

TOY TRAIN AND MODEL RAILROAD FLEA MARKET

BEAUTIFUL
NEW
LOCATION



2017 SHOWS

Sunday, January 8th, 2017
Sunday, April 9th, 2017


One of Ohio's premier Flea Markets featuring all gauges of model railroad equipment, memorabilia and railroad related items. **IT JUST GOT BIGGER AND BETTER!**

Over 100 dealer tables, wider aisles, excellent lighting, easy dealer access and unlimited paved parking.

NEW LOCATION!!!
SALEM CENTER PLEX
1098 N. Ellsworth Ave.
Salem, Ohio 44460

HOURS 10:00 a.m. - 3:30 p.m.
ADMISSION \$5.00 per person
TABLES \$ 600 \$25.00 Each

For Reservations call: Jim Pepe (330) 547-3614 or
Ed Williams (330) 758-0115
WEBSITE: WWW.YMRA.ORG



2017 PITTSBURGH MODEL RAILROAD JAMBOREE

ENJOY A FULL DAY OF MODEL RAILROAD ACTIVITIES!

Saturday April 29, 2017
Sewall Center
Robert Morris University
Moon Campus


OPEN TO EVERYONE!
Registration opens at 8:00 a.m.
Activities run all day!

Modeling Clinics
Model Contests
Door Prizes & Raffles
Modular Layouts
White Elephant Tables
Sunday Layout Tours

Check our website for list of clinics, program schedule, contact rules and latest information!
www.keystonedivision.org

Registration includes buffet lunch & continental breakfast!

REGISTER EARLY AND SAVE!
Special information and questions: 440-273-0000 or e-mail: info@keystonedivision.org
Keystone Division is a non-profit organization. All proceeds from this event will go to the support of the Division's activities. Payment will NOT be by check. Please do not bring cash to the event. Payment options: Major credit cards are welcome. Individual space reservations are available. Registration is required for all attendees. Registration is required for all attendees. Registration is required for all attendees.




PLEASE NOTE: This is not a model train sale or show. More details can be found on the back of this flyer.

Name _____	Keystone Division Fee (New Members - includes lunch & continental breakfast)
Address _____	
City _____	MEMBER CONTROLS BEFORE APRIL 15th \$35.00 _____
State _____ ZIP _____ Primary Email _____	Non-MEMBER CONTROLS BEFORE APRIL 15th \$18.00 _____
Phone _____ Cell _____	Children Under 12 \$11.00 _____
Email _____	50+ member or relative with registration \$35.00 _____
MSR Member # _____	Add State/Local Tax \$5.00 _____
	TOTAL _____

Mail to: NYSR, c/o Tom Cose, 5007 Mt. Lebanon Road, Pittsburgh, PA 15228. E-mail: tomcose@keystonedivision.org F: (412) 224-0885

Sponsored by the Keystone Division of the NYSR Model Railroad Club





Spring Layout Tour

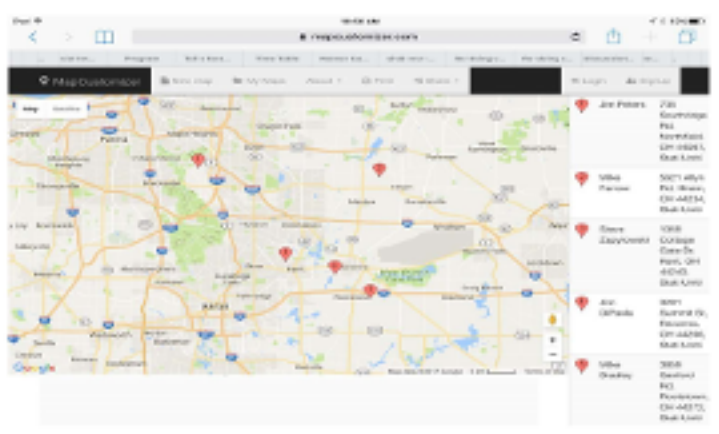
Saturday, April 1

Welcome to our annual Division 1 Layout Tour. I want to thank all layout owners for graciously opening their doors to host. We have five layouts open this year, all from ten to five. No two layouts are alike. See something you like? Mention it! Have a question? Ask! In other words, let's also be gracious guests. Please ask before taking pictures. Finally, respect the time by not arriving early or staying late.



For the GPS Click Here for Personalized Map to Host
 Jim Peters - 735 Southridge Rd. Sagamore Hills
 Hwy - Mile Marker - 5214 on Rt. 1 from 4255
 List of Hosts:
 Jim Peters - 735 Southridge Rd. Sagamore Hills
 Mike Bradley - 3850 Sandford Rd. Rootstown 44272
 Steve Zapytowski - 1050 Cottage Gate Dr. Kent

James Carl Peters
 Layout Tour Chair
 (216) 402-8517 (voice/text)
 jpeters@spikes.com



Division 1 Layout Tour Spring 2017				
Number	Name		Location	
1	James	Peters	735	Southridge Rd. Sagamore Hills
2	Mike	Farrow	5621	Alyn Rd. Hiram
3	Steve	Zapytowski	1050	Cottage Gate Dr. Kent
4	Jim	DIPaola	3201	Summit Rd. Ravenna
5	Mike	Bradley	3850	Sandford Rd. Rootstown



2017 PITTSBURGH MODEL RAILROAD JAMBOREE

ENJOY A FULL DAY OF MODEL RAILROAD ACTIVITIES!

Saturday April 29, 2017
 Sewall Center
 Robert Morris University
 Moon Campus

OPEN TO EVERYONE!
 Registration opens at 8:00 a.m.
 Activities run all day!

Enjoy an all day of a variety of hobbies - model railroading, scenery building, detailing, model stock, prototype railroading and best history!

Modeling Clinics
 Model Contests
 Door Prizes & Raffles
 Modular Layouts
 White Elephant Tables
 Sunday Layout Tours

REGISTER EARLY AND SAVE!
 General admission is \$10.00 per person. Children 12 and under are \$5.00. Registration is required for all attendees. Payment may be made in cash or by credit card. Registration is required for all attendees. Payment may be made in cash or by credit card. Payment may be made in cash or by credit card. Payment may be made in cash or by credit card. Payment may be made in cash or by credit card.

Check our website for list of clinics, program schedule, contest rules and latest information!
www.keystonedvision.org

Registration includes buffet lunch & continental breakfast!

Name _____
 Address _____
 City _____
 State _____ Zip _____ Priority Mail _____
 Phone _____ Cell _____
 Email _____
 NRM Number # _____

Keystone Pay at the Time for Payment - Includes lunch & continental breakfast
 \$10.00 per person
 \$15.00 per person
 \$20.00 per person
 \$25.00 per person
 \$30.00 per person
 \$35.00 per person
 \$40.00 per person

Made possible by the National Division of the NRM's Mid-Central Region
 Sponsored by the Keystone Division of the NRM's Mid-Central Region
 Keystoned Vision
 2021 New Moon Road, Pittsburgh, PA 15209
 Email: keystoned@keystonedvision.org
 P: (412) 751-4343



TCA

LAKE ERIE CHAPTER
TRAIN COLLECTORS
ASSOCIATION

THANKSGIVING TRAIN MEET

Saturday, May 6th, 2017
U.A.W. Hall, 5615 Chevrolet Blvd., Cleveland, Ohio

- Free Parking
- Ground-Level Entrance
- Good Lighting
- Wide Risks
- Refreshments Available



- New and Old Trains
- Parts, Repair Manuals, Price Guides, Books, etc.
- Train Videos
- Model Building Supplies and Kits
- Lionel, American Flyer, MTH, Williams, Weaver, LGB
- O, S, HO, N, Z & Large Scale

NEXT LAKE ERIE CHAPTER MEET: NOVEMBER 25TH, 2017
All TCA National Division Chapter Rules will be enforced.
ADMISSION: Adults \$6 • Children Free
 Open to the Public 10 am - 3 pm
 For More Information Contact: David Stachnik at dstachnik@tca.com.



OPEN HOUSE

Cuyahoga Valley & West Shore Railroad Depot 2017 SPRING OPEN HOUSE

Saturday, May 6th • 11 a.m. to 4 p.m.
 Sunday, May 7th • 11 a.m. to 4 p.m.

- Admission \$3.00 Donation • Kids FREE**
- Visit our 140-year Old Historic Depot
 - Raffle Prizes
 - Tour our Real Caboose!
 - Operating HO, O & N Scale Models



Cuyahoga Valley & West Shore
 MODEL RAILROAD CLUB
 Olmsted Falls Depot - 25802 Barfield Ave.
 OLMSTED FALLS, OHIO 44138
 TEL: (440) 235-6565
www.cvwsrnc.org
 Follow us on:

MODEL TRAIN DAYS

at
THE PAINESVILLE RAILROAD MUSEUM
 475 Railroad Street, Painesville, Ohio 44077
 For info call Len at 440-417-6746

MAY 6-7 2017

10 am to 5 pm





See operating Model Train Layouts in N scale, HO scale, S scale, O gauge and G gauge.
 12 Different Layouts to see!
 Model Train flea market on grounds.





Admission \$5.00 each, Family \$7.00



Direction to Painesville Depot
 I-90 (exit 200) to Rt. 44
 North on Rt. 44 to Rt. 2
 East on Rt. 2 (1.5 miles) to OH 505 / OH 385 (exit 229)
 South on OH 283 (for 200 feet), left turn (east onto Chisler Rd.)
 East on Chisler Rd (0.7 miles) to North State Street
 South on North State Street under 191 Dredge (to Railroad Street)
 East on Railroad Street to Depot.

Food and Drinks available.

Proceeds to help the restoration and preservation of the historic NYC Painesville Depot and bring her back to its glory days of the NYC.

www.painesvillerailroadmuseum.org
 2017 © Len Smith



The Baltimore & Ohio Railroad
Historical Society
presents the:

2017 Ohio Mini Convention

When:

Saturday, May 20
9:00 AM until 5:00 PM

Where:

The Willard Depot Museum
542 South Main Street
Willard, Ohio

This is one of the many events that will occur during the year long celebration of the 100th year anniversary of the naming of Willard after Daniel Willard.

NEW SHOW!!

Hello

I am Dave Martin, the chairman, of the Train Show Committee of the Jefferson Ohio Historical Society. We are going to host a train swap and sale event July 15, 2017. I have attached seven pages of information for you to view.

Our event will be located in the Jefferson Community Center in downtown Jefferson. Jefferson is the county seat of Ashtabula County, the largest county in the state of Ohio. Jefferson is located near the center of the county, not far south of Interstate 90.

This is a new event for us. We are beginning simply with a 3,000 sq. ft., 43 table event. But because we are new and in an area that has not been explored, it is hard to predict what may be brought in for sale. Collectors are always looking to upgrade their collections. Our table rental rates are a bargain at \$12.00 and \$16.00, well within the budget of the most frugal hobbyist. While we are hoping to be supported by ordinary people we also want to extend an invitation to professional experts like yourself, to join us.

You may view us on our website www.jeffersonohiohistoricalsociety.org

If you have a question you may e-mail us at: jeffersonohiohistoricalsociety@centurylink.net

You may phone us and leave a message [1-440-576-5333](tel:1-440-576-5333)

Our mailing address is: P.O. Box 574
Jefferson, Ohio 44047

Jefferson Historical Society presents the first annual

Train Swap and Sale



Saturday, July 15, 2017

10:00 am-3:00 pm Admission \$2.00, Children under 12 FREE!

Good food available at reasonable prices!

Train and Railroad related items only

Jefferson Community Center

11 East Jefferson St., Jefferson, Ohio, 44047

Email jeffersonohiohistoricalsociety@centurylink.net

Website www.jeffersonohiohistoricalsociety.org

Leave a Message 1(440) 576-5333

PLEASE PRINT

Name _____

Phone (____) _____

Address _____

City _____ State _____ Zip _____

Email _____

Tables (R) _____ @ \$12.00 ea \$ _____

Tables (R) _____ @ \$16.00 ea \$ _____

TOTAL \$ _____

Make checks payable to:

Jefferson Historical Society

P.O. Box 574, Jefferson, Ohio, 44047

The officers and members of the Jefferson Historical Society are not responsible for any loss, damage, injury or tort during this event or related activities.

We are a small, 43 table event.

Return this part with your payment

**THIS IS THE ACTIVITY THAT GENERATES 98% OF OUR INCOME!
PLEASE SIGN UP AT THE JUNE OR SEPTEMBER MEETING OR VIA
EMAIL TO THE SHOW CHAIRMAN, DAVID JAMES
david.j@brtcharter.com
FOR A FEW HOURS WORK (& FREE ADMISSION).
IT TRULY TAKES A VILLAGE TO MAKE A NMRA DIVISION!!**



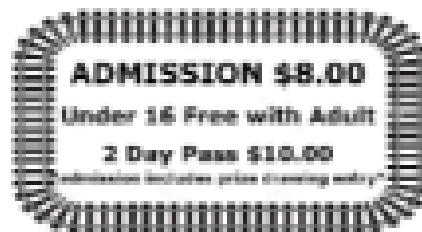
OUR 44th YEAR!
Saturday October 7, 2017
Sunday October 8, 2017
NEW TIMES!
10:00 a.m. to 4:00 p.m.
Both Days!

Family Fun For All Ages



FREE PARKING
4 BUILDINGS
OVER 60,000sq ft.
400 DEALER TABLES
NEW & USED

OPERATING TRAINS!!



ADMISSION \$8.00

Under 16 Free with Adult

2 Day Pass \$10.00

Admission includes price covering entry



50/50 RAFFLE
DOOR PRIZES
COLLECTIBLES
HANDICAP ACCESS
FOOD / ATM

SHOW MANAGER / CHAIRMAN

DAVID JAMES

djames@thegreatberetrainshow.org

419.786.8907


www.thegreatberetrainshow.org

Cuyahoga County Fairgrounds

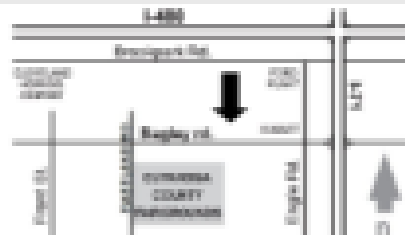
Berea, Ohio

Use Bagley Road Entrance

For More Information go to:
www.thegreatberetrainshow.org



NATIONAL MODEL RAILROAD ASSOCIATION
Division 4
Mid-Central Region
www.div4.org



MODEL TRAINING DAY

Sunday November 5, 2017
11:00 a.m. – 4:00 p.m.

BLACK RIVER LANDING & TRANSPORTATION CENTER

421 Black River Lane (under the bridge)
Lorain, Ohio 44052

FREE!

For Anyone Interested In Learning More
About Model Railroading!



• Under The Age Of 15 Must Be Accompanied By An Adult •

CELEBRATE NATIONAL MODEL RAILROAD MONTH

KIDS AND ADULTS • ALL SKILL LEVELS

LEARN HOW TO GET STARTED OR HOW TO IMPROVE WHAT YOU ALREADY HAVE

OPERATING TRAINS • DEMONSTRATIONS • DISPLAYS • HANDS ON TRAINING

DOOR PRIZES!

**BUILD A MODEL KIT and TAKE
IT HOME WITH YOU!**

KITBASHING

WEATHERING and SCENERY

BUILDING WITH FAST TRACKS

**LEARN HOW TO EARN YOUR RAILROADING
BOY SCOUT MERIT BADGE**

MODEL RAILROAD ELECTRONICS

DCC vs. ANALOG

WHAT SCALE IS RIGHT FOR ME

MORE! MORE! MORE!

For More Information: <http://www.div4trainingday.org>

Email: info@div4trainingday.org

Presented by:



**The National Model Railroad Association
Mid-Central Region Division 4**

Serving Lorain • Cuyahoga • Medina • Erie • Huron Counties

www.div4.org

With the cooperation of:

*The Lorain Growth
&
Tourism Committee*



HOBBY SOURCES IN OUR AREA

AL'S TRAINS & HOBBY LLC
 708 BROADWAY AVE.
 BEDFORD, OHIO 44146



DCC INSTALL
 FRAME MILLING
 TRAIN SETS & ACCESSORIES
 MODEL KITS-SLOT CAR SETS
 & ACCESSORIES

HOURS:
 M-W-F: 10-6
 THURS: 10-7
 SAT: 10-4
 SUN-MON: CLOSED

Phone: 440-232-0591 Fax: 440-232-0596
www.alstrains hobby.com email: al@alstrains hobby.com

(216) 661-7300
 FAX (216) 661-6433



TRADING POST TRAIN SHOP
 FEATURING LIONEL TRAINS

JAMES J. BERILLA
 Owner

4394 PEARL RD.
 CLEVELAND, OHIO 44109

DEPOT TRAIN & HOBBY
 "It's not just a Hobby . . . It's an Adventure."

Garden Railroad, Lionel, HO, & N
 Trains, Track, and Accessories
 Plastic Models, Rockets,
 Wooden Ships, Hobby Tools, and Paint



4342 W. 130th Street
 Cleveland, Ohio 44135
 216-252-8880
www.depotland.com

KEEP YOUR TARGET "ACQUIRED"
 AT THE

**WARZONE
 MATRIX**



CHRIS WILSON
 (216) 433-1316
 WARZONEMATRIX.COM

1704 ROCKY RIVER DRIVE
 CLEVELAND OHIO 44135
 M2ONE@sbcglobal.net

MON-SAT 10-5
 SUN. NOON-5

www.ormandys.com



EXTENDED HOLIDAY HOURS

I - HO - Z GAUGES AND PARTS

Ormandy's



TRAINS & TOYS FOR THE CONNOISSEUR
 SPECIALIZING IN EUROPEAN TRAINS
 BUY & SELL OLD TOYS



JOHN ORMANDY

330-722-1019
 330-722-2205 Fax



10 PUBLIC SQUARE
 MEDINA, OHIO 44256

Model Trains

Jan Dell Flowers Train Shop
 Lionel - MTH - Märklin - Micro-Trains - Kato - LGB - Piko - Bway Ltd.

19350 Detroit Road Rocky River OH 44116
 440/331-2392
 Jim Lewis



Uncle Ray's Trains
 4282 Lake Rd. • Sheffield Lake, Ohio 44054







uncleraystrains@gmail.com
 Or call Uncle Ray at... (888) 933-2999 • (440) 933-0609

www.uncleraystrainsoh.com

EASTERN OHIO TRAINS
The Hobby Home of High Speed Service

2740 Fairmount Blvd.
 Cleveland Heights, Ohio 44106
 Phone: 216-215-7377
 Fax: 216-371-0931
 email: eohts@aol.com
www.easternohiotrains.com

Joe Andrews, Proprietor

Strongsville Hobby of Elyria



440-366-0665

ELECTRIC & NITRO R/C CARS, BOATS, AIRPLANES, SLOT CARS, ROCKETS
HOBBY SUPPLIES & PINE CAR DERBY, TRAINS & PLASTIC MODELS

831 Chestnut Commons Dr. Elyria, Ohio 44035
Phone (440)366-0665 Fax (440)366-0666

R/C TRACK ON SITE
www.strongsvillehobby.com

Mon - Fri 11:00 - 8:00
Sat 11:00 - 6:00
Sun 12:00 - 5:00
JERRY IVANCIC

DANIELS HOBBIES

Premium Quality
Est. 1978

34E Main Street, Norwalk, OH 44857
M-Sat 10AM-6PM, Closed Sundays
(419)588-2029 | danielshobbies.com

Mike's Diecast and Collectibles

mike and rob

4153 rocky river drive Cleveland

mike 1440-494-4581 rob 216-551-8502
mike'sdiecast@aol.com



BAD L's Hobby

Your One Stop Slot Car Shop!

13397 Smith Road
Middleburg Heights, OH 44130



440-941-BADL (2235)
info@badlhby.com
<http://badlhby.com>

Bob Lusch
The "B" in BAD

JASON'S BRASS POLES

We specialize in trolley model products.
Railroad Trolley & Specialty & Model Railroad Dealer

Brian Weisman - Owner
bweisman@roadrunner.com (TROLLEYS & MODEL RAILROAD DEALER)

<http://www.jasonsbrasspoles.com/>

STOCKYARD EXPRESS LLC

O-Gauge MTH Electric Trains & Accessories
Where the bull stays in the barn and the train rolls down the track

- MTH Authorized Service & Demo Center -

MTH - Lionel - Atlas
'O' Trains, track, accessories and more

49293 Plate Rd
Oberlin, OH 44074
(South of Bountert & SR 20)

Clyde & Diane Lewis
440.774.2131 / 440.774.7575 fax

www.stockyardexpressllc.com
email:stockyardexpress@aol.com



BEN FRANKLIN

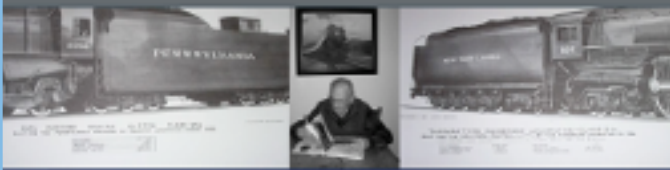
Plastic, Wood & Metal Models
Trains • Rockets • Kites • Coin Books
Die Cast • Roadrace • Pine Car Derby
Puzzles • Radio Control • Dime Store

Large Selection
Great Prices
Howard Mowcomber

183 Park Ave.
Amherst, OH 44001
440-988-5462

tanm55@centurytel.net

Stauffer Books & Prints



www.staufferbooksandprints.weebly.com

STAUFFER BOOKS & PRINTS

(330) 636-1672

HOBBYTOWN USA

7982 PLAZA BLVD.
MENTOR, OH 44060

HTUMENTOR@AOL.COM

440-974-2116

MON-SAT 10am-8pm

440-946-5588

SUN 12pm-5pm

NEW

Sounds Of Motion



DCC SALES AND TECHNICAL SUPPORT

6910 SOM Center Rd.
Solon, OH 44139
Phone 440-248-4599

FRANK FEKO
Proprietor
frankfeko@gmail.com

This is the same Frank Feko that sets up in one of the side rooms at most of our division meetings. - Editor

PLEASE SUPPORT THESE DEALERS!

DIVISION 4, MCR, NMRA

The North Coast Division

The North Coast Division holds 10 meetings a year (none in July and August). Meetings are on the 2nd Friday of the month. A social half hour starts at 7:00 p.m. followed by a short business meeting at 7:30. A railroad themed raffle and clinic complete the typical agenda. Meetings are held at The Church of The Redeemer, 23500 Center Ridge Road, Westlake, OH 44145. Visitors are welcome to attend any meeting.

The Flatwheel is published monthly (except during July and August) by Division Four of the Mid-Central Region (MCR) of the National Model Railroad Association (NMRA). All comments are welcome. Views expressed in the *Flatwheel* do not necessarily reflect the opinion of the NMRA, MCR,

of Division Four.

Uncredited photos courtesy of the editor or staff photographer Dave Williams.

The Flatwheel is typically electronically published on the Monday preceding the monthly meeting. Submissions are due no later than the 26th of the preceding month.

Yahoo - The Division has a Yahoo group available for members. Send your request to join to dave_wms@sbcglobal.net. It's best to include "Division 4" in the subject line and include your name. The group is private and does not appear on the Yahoo directory. 🚂



Erie Mad River Model Railroad Club, Sandusky



About Us

We are Division 4 of the Mid-Central Region of the National Model Railroaders Association. With more than 200 members from Cuyahoga, Erie, Huron, Lorain and Medina counties in the state of Ohio. The North Coast Division meetings are normally held on the second Friday of the month to hear guest speakers, share skills, have railroad related clinics, and to share common problems and successes. Many of us get together informally in round-robin sessions to operate and work on each other's layouts, or just to talk railroads and modeling.